



**Baltimore Wharf, E14 9EQ**  
**£1,800 Per Month**

**coopers**  
OF LONDON EST. 1986

# Baltimore Wharf, E14

- 24hr Concierge
- Residents Gynasium
- Close to transport links
- Private Balcony

Amazing studio-suite available to let in Canary Wharf's luxury development - Baltimore Wharf.

The apartment is spacious with floor to ceiling windows, fold-out double bed, heated wood flooring, high quality furnishings, luxury kitchen and shower room.

This stunning development has a 24hr concierge, fully equipped gym, swimming pool and spa and a bar, snooker room, private cinema and golf simulator.

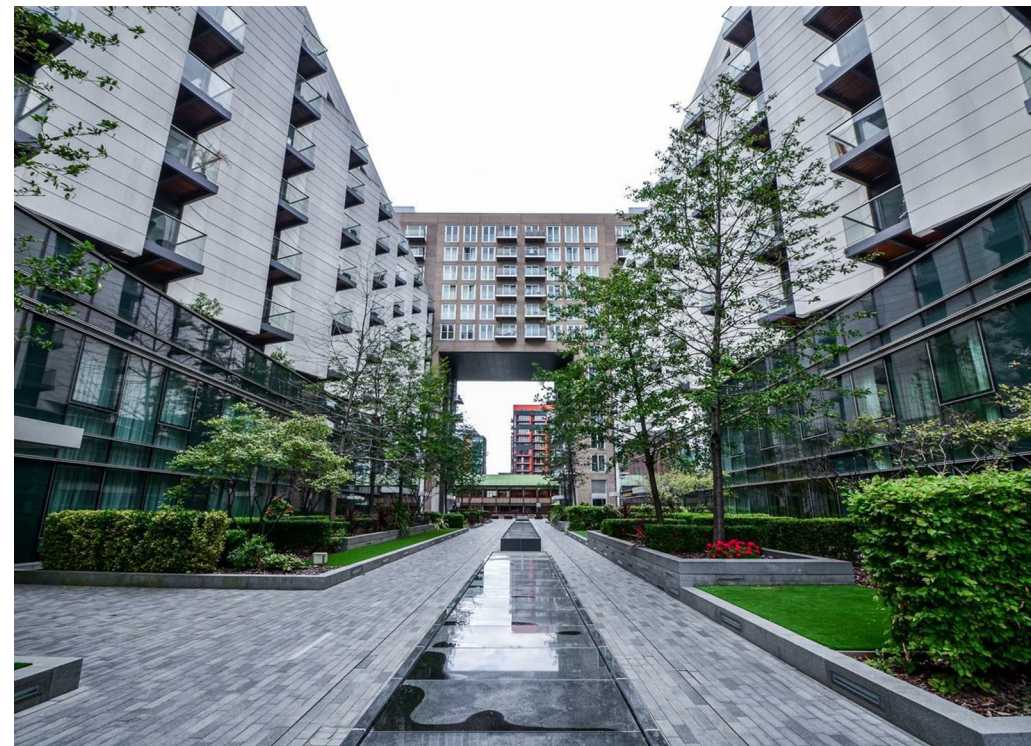
Adjacent to Crossharbour DLR and 5 minutes walk to Canary Wharf Jubilee Line station.

Amazing studio-suite available to let in Canary Wharf's luxury development - Baltimore Wharf.

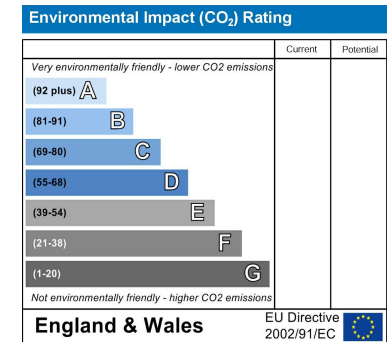
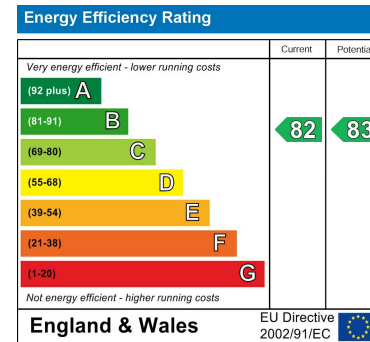
The apartment is spacious with floor to ceiling windows, fold-out double bed, heated wood flooring, high quality furnishings, luxury kitchen and shower room.

This stunning development has a 24hr concierge, fully equipped gym, swimming pool and spa and a bar, snooker room, private cinema and golf simulator.

Adjacent to Crossharbour DLR and 5 minutes walk to Canary Wharf Jubilee Line station.







## Viewing

Strictly by appointment with:  
Coopers of London , 22 Cleveland Street,  
Fitzrovia, London W1T 4JB  
[info@coopersoflondon.co.uk](mailto:info@coopersoflondon.co.uk)

**0207 580 9658**

These particulars, whilst believed to be accurate are set out as a general outline only for guidance and do not constitute any part of an offer or contract. Intending purchasers should not rely on them as statements or representation of fact, but must satisfy themselves by inspection or otherwise as to their accuracy. No person in this firm's employment has the authority to make or give any representation or warranty in respect of the property.